

A414 Edinburgh Way

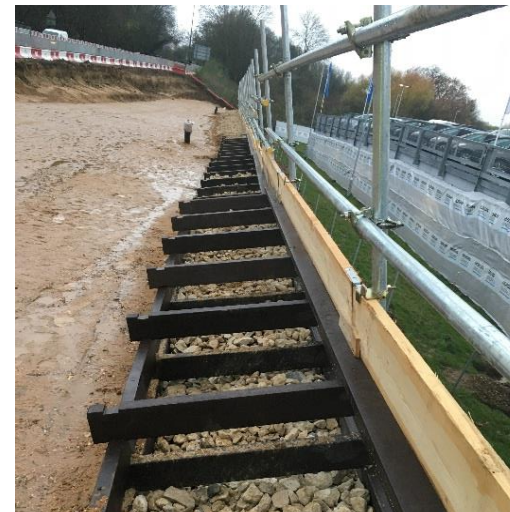
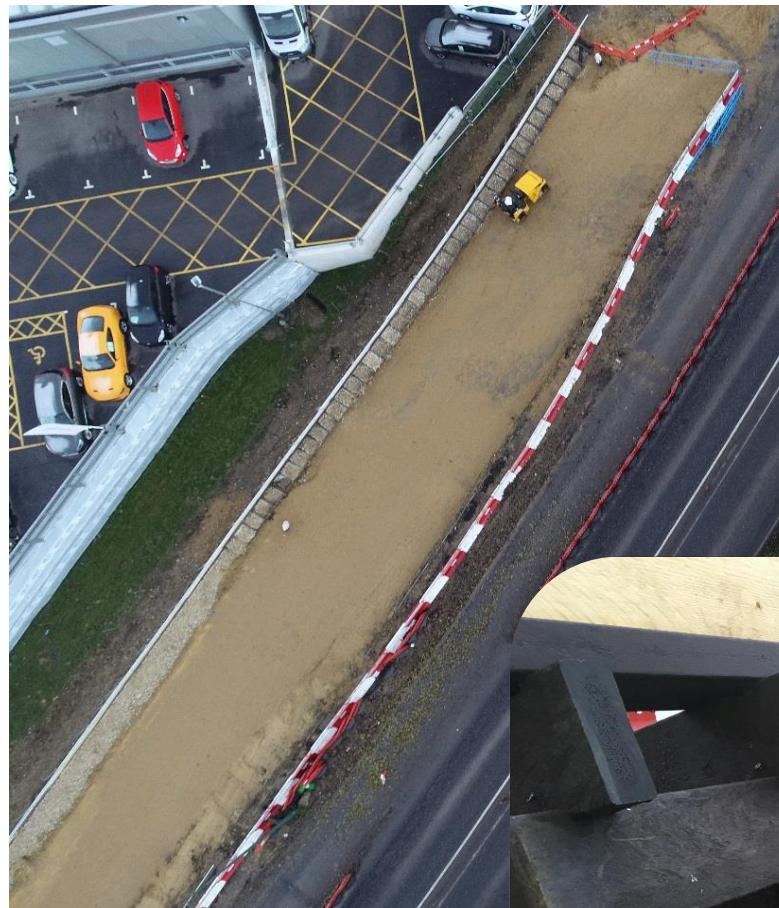
Latest progress – November 2018

Crib Retaining Wall Construction – A 414 South

We have completed the crib retaining wall and are three quarters of the way through the backfill. The remaining fill will be completed as the weather allows.

Interesting fact –

The brown panels making up the crib retaining wall are completely made of recycled plastic making them environmentally friendly. This also allows them to be fully recycled in the future should the wall ever need to be removed making then a very sustainable construction option.



A414 Edinburgh Way

Latest progress – November 2018

Edinburgh Way – North and South Side

Statutory services diversions continue with the new water pipe having been connected and chlorinated on the south side. Street lighting ducts have been installed on nights outside CMC Hyundai/Seat. These were completed on nights to minimise any impact on the dealerships business.

Interesting fact –

All of our statutory service diversions and duct excavations are being back filled with recycled type 1 as an environmentally friendly construction process.



A414 Edinburgh Way

Latest progress – November 2018

Edinburgh Way – North and South Side

What you can't see –

- We have commenced the installation of the power cables for the new lighting columns across the scheme.
- Openreach have commenced the installation of their new cables to the north side of the scheme.



A414 Edinburgh Way

Latest progress – November 2018

Edinburgh Way – Harlow Mill Roundabout

Drainage works have commenced at the Harlow Mill Roundabout with the installation of three catch pits and the connecting drainage pipe runs between them.

Interesting fact –

All of our drainage installations are being back filled with recycled type 1 as an environmentally friendly construction process.

The catch pits come with their bases pre cast as part of the chamber. This reduces the amount of concrete that is required on the scheme in turn reducing our carbon footprint.



Please keep an eye on these boards for further notices and updates

A414 Edinburgh Way

Where to find out more

Further details about the scheme can be found on the Essex County Council website at:

- <https://www.essexhighways.org/highway-schemes-and-developments/major-schemes/a414-edinburgh-way-cambridge-road.aspx>
- Alternatively click on the QR code provided.
- Information about other works in the area can be found at: www.roadworks.org or via the QR code on the right.



For general enquiries, please contact the Essex County Council customer service team:

- By telephone 0345 603 7631
- Online: <http://essex.gov.uk/enquiries>
- Or use the QR code provided



A414 Edinburgh Way

Looking into the future

We have now created a full visualisation of how the finished scheme will look. Please scan the QR code below or use the link to look into the future.



<https://youtu.be/8dUmeeqYn1g>

A414 Edinburgh Way

Edinburgh Way – North side

Planned activities December 2018

Phase

Utility Diversions

Main Works

North side phase 1

- Openreach cable installation

- Connecting the new lighting columns.

North side phase 2

- Openreach cable installation

- Connecting the new lighting columns.

North side phase 3

- Openreach cable installation

- Connecting the new lighting columns.
- Road box excavation to the north side of Harlow Mill Roundabout.

A414 Edinburgh Way

Edinburgh Way – South side

Planned activities December 2018

Phase

Utility Diversions

Main Works

South side phase 1

- Water main connections and testing

- Footpath kerbs and fill operations

South side phase 2

- Water main connections and testing
- Openreach cable box installation

- Footpath kerbs and fill operations

South side phase 3

- Water main connections and testing

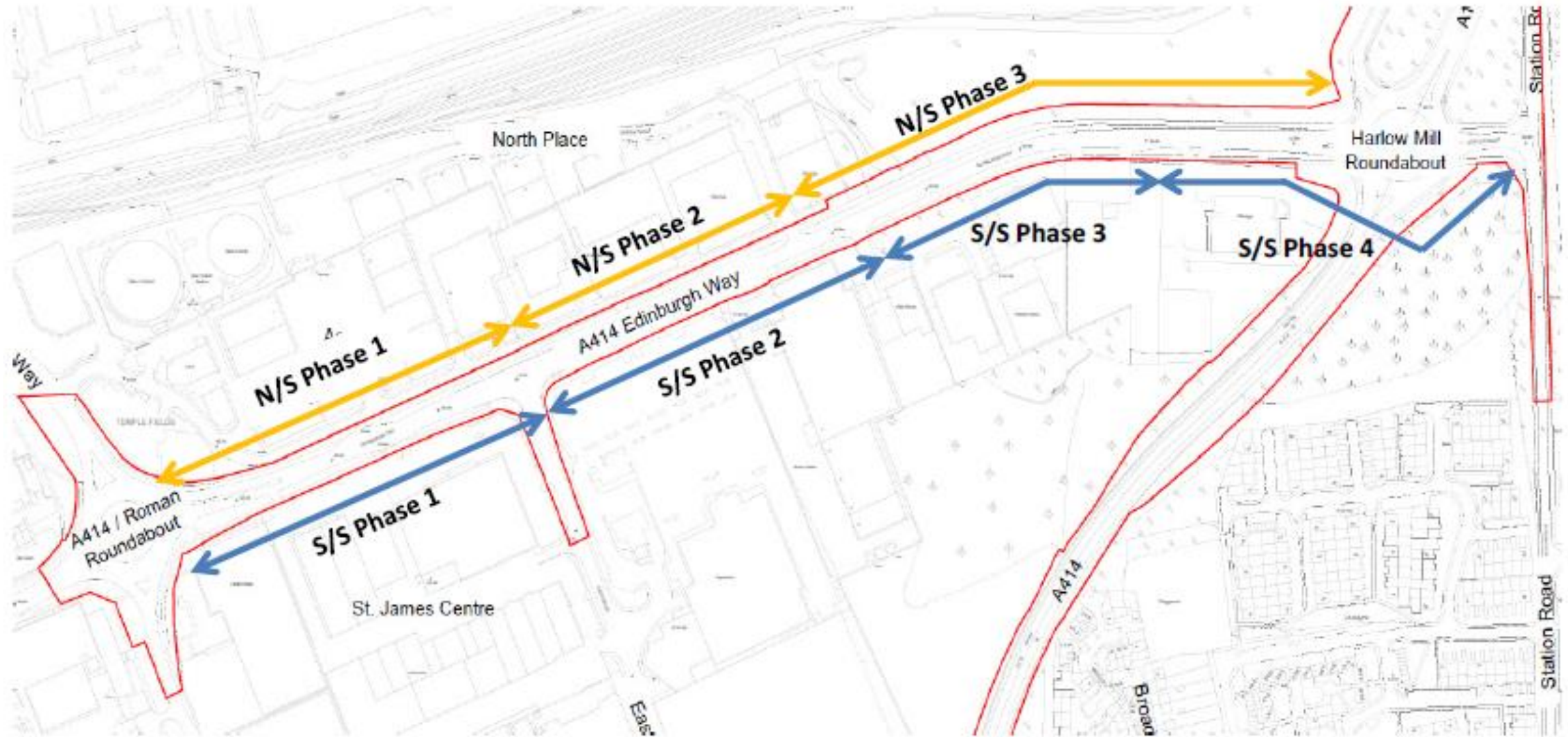
- Footpath kerbs and fill operations

South side phase 4

- Water main connections and testing

- Footpath kerbs and fill operations

A414 Edinburgh Way Phase Sections



A414 Edinburgh Way

No Right Turn Signs



There are a series of No Right Turn signs in place along the scheme. These are in place for the safety of the public, the workforce and are also a legal requirement. Please ensure they are adhered to.